

Establishing and Communicating Trust in GENI

Raquel Hill and Jean Camp
Indiana University

Trust Issues

- One goal of GENIE O&M is to detect malicious behavior and return infrastructure to trusted state
 - What is this trusted state?
 - Does it include rolling back software
 - Clearinghouses
 - Specify criteria for trust (i.e. identity, behavior)
 - Extend trust model beyond authentication and access control
 - Include set of conditions that will enable trustors to evaluate an entity
 - Users
 - Everything is programmable; how does a user verify the integrity of the software that is running on a node?
-

Trusted Computing

Enable

Trustworthy Computing

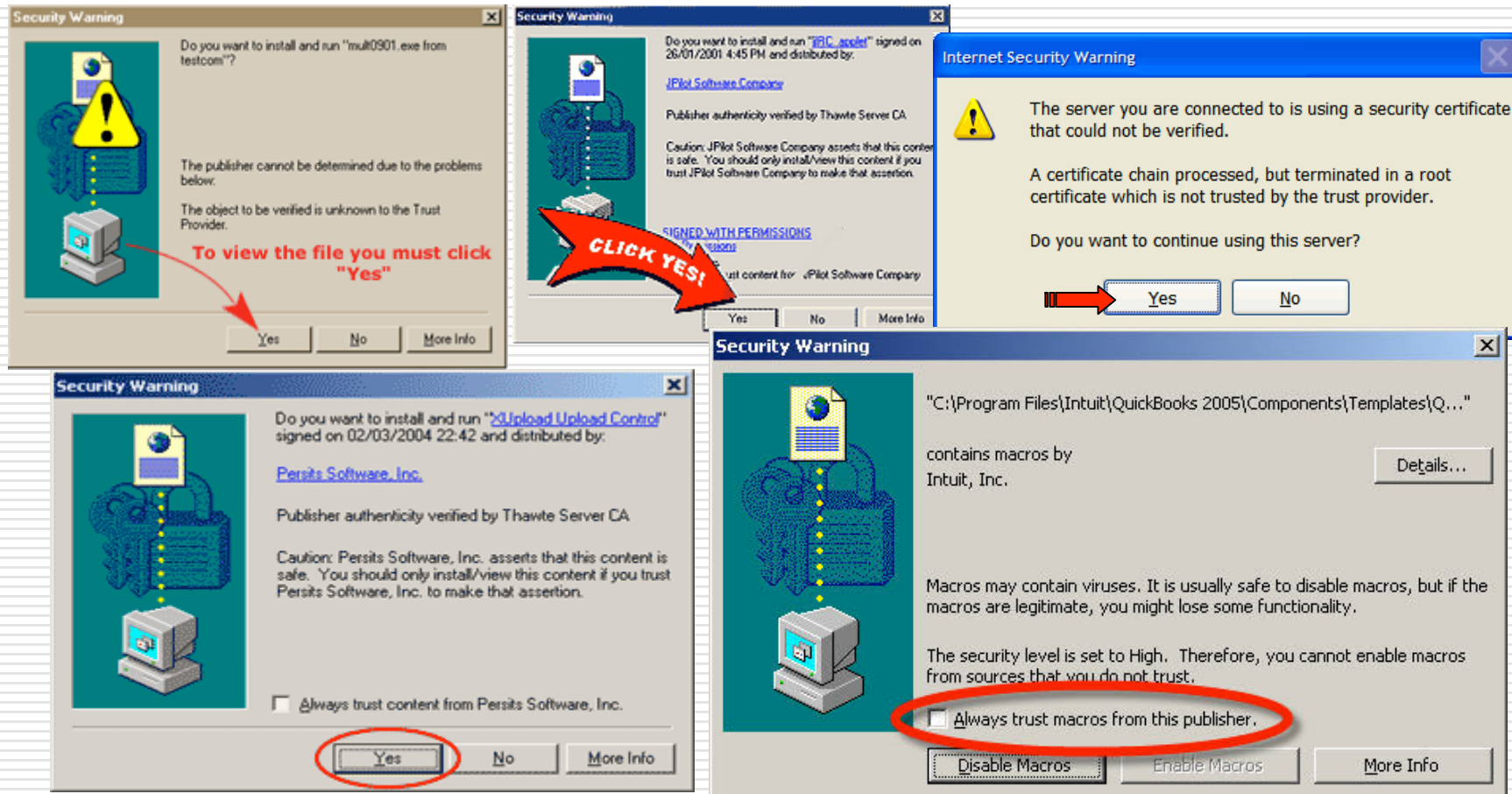
Communicate

Trusting Computing

Security Communication as Risk Communication



The Current Response to Security Risks...



Communications Challenge

- ❑ Map changes in trust levels to risk
 - ❑ Understand how individuals differentiate between changes in risk levels
 - ❑ Assist the network, and GENI, in effectively responding to the change in risk
-