



Center for Education and Research
in Information Assurance and Security

ReAssure

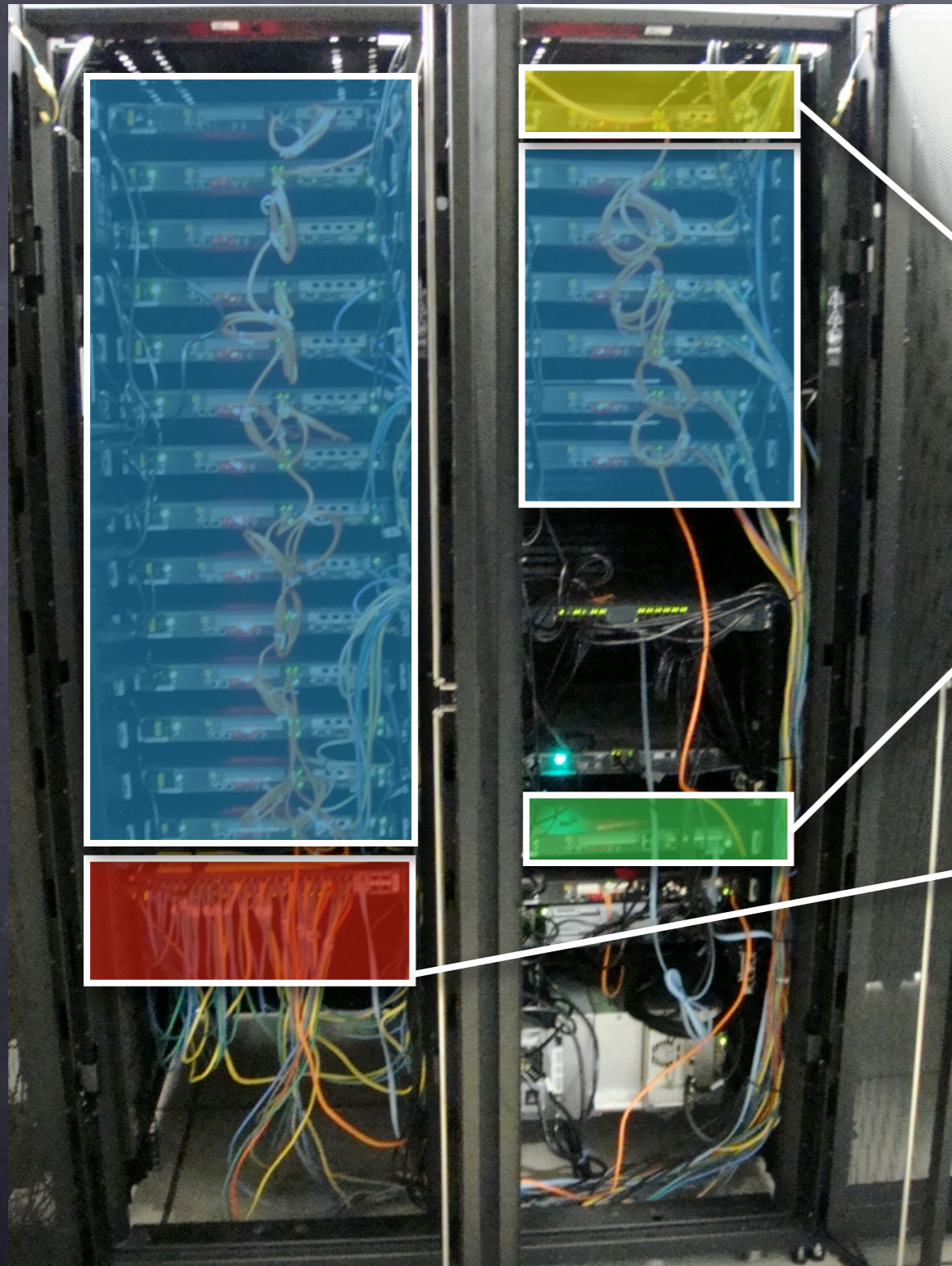
&

SELinux

PURDUE
UNIVERSITY

Jacques Thomas, Pascal Meunier, Patrick Eugster,
and Jan Vitek

ReAssure



Firewall



Image Server



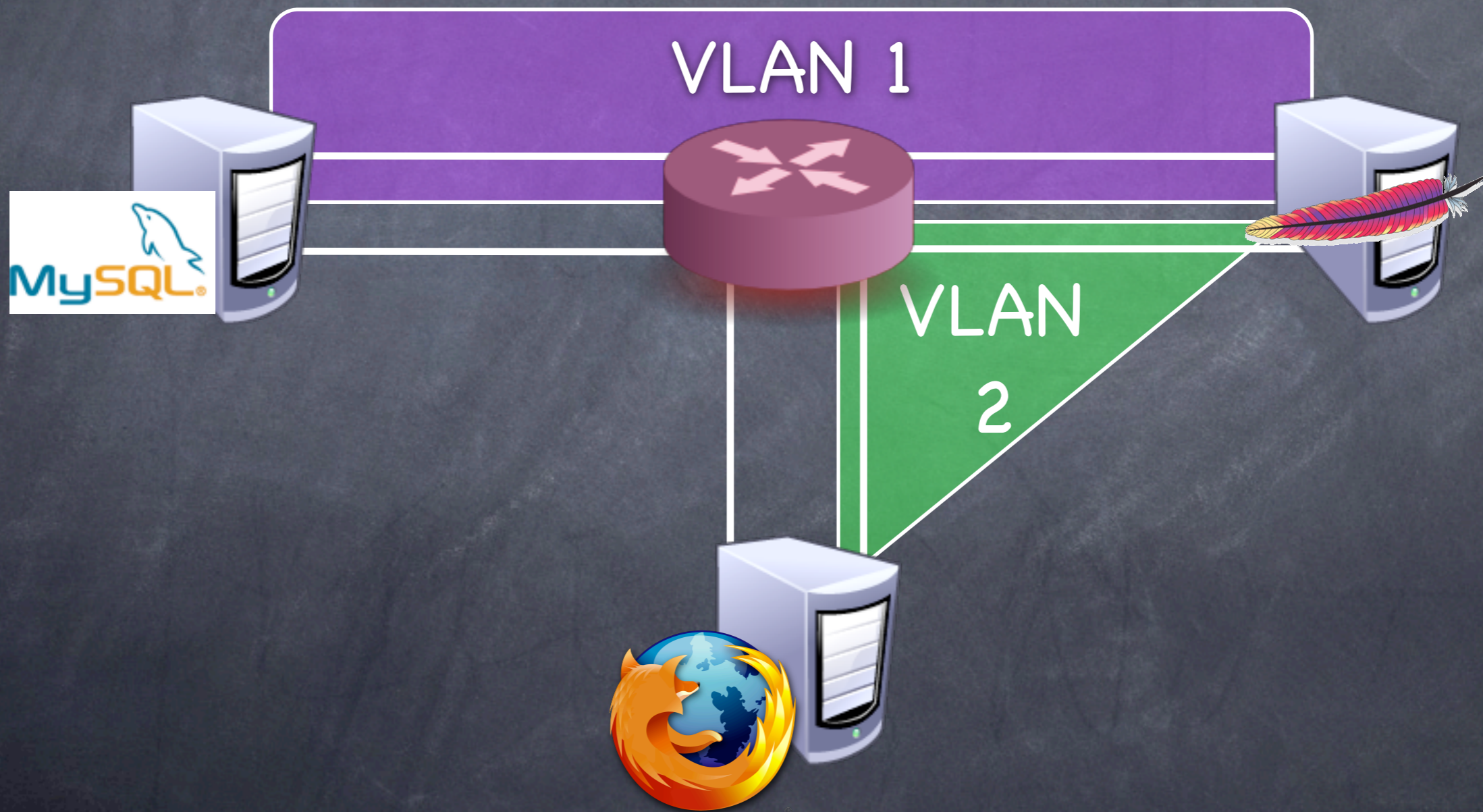
Managed Switch



Experimental boxes



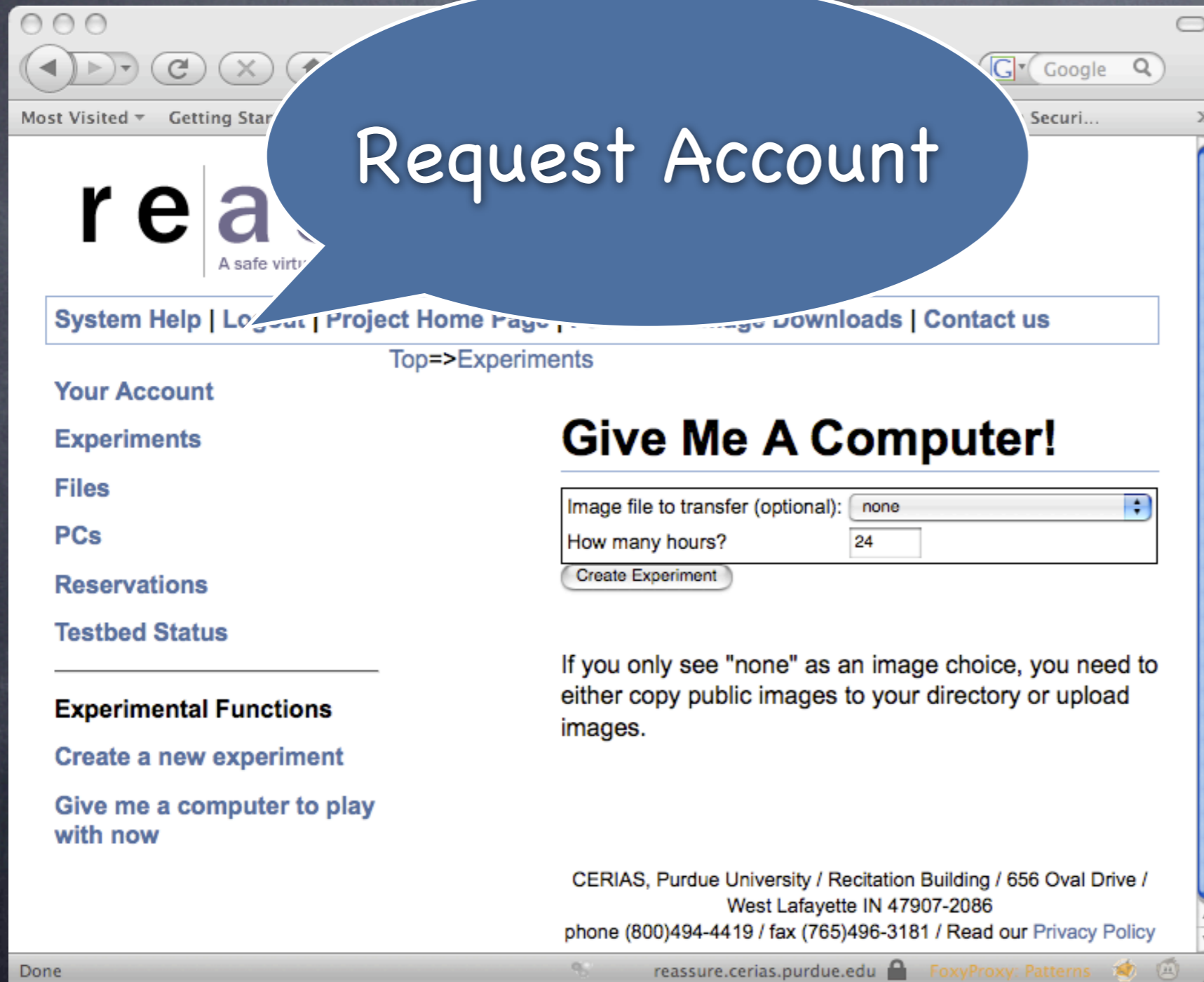
Deploying



Experimenting !



<https://reassure.cerias.purdue.edu>



The screenshot shows a web browser window displaying the website reassure.cerias.purdue.edu. A blue speech bubble with the text "Request Account" is overlaid on the page. The website header includes the logo "re a" and the tagline "A safe virt...". A navigation bar contains links for "System Help", "Logout", "Project Home Page", "Downloads", and "Contact us". Below the navigation bar, there is a "Top=>Experiments" link. The main content area is divided into two columns. The left column contains a sidebar with links for "Your Account", "Experiments", "Files", "PCs", "Reservations", and "Testbed Status". The right column features a section titled "Give Me A Computer!" with a form containing a dropdown menu for "Image file to transfer (optional)" set to "none", a text input for "How many hours?" set to "24", and a "Create Experiment" button. Below the form, there is a note: "If you only see 'none' as an image choice, you need to either copy public images to your directory or upload images." At the bottom of the page, contact information for CERIAS at Purdue University is provided, including the address, phone number (800)494-4419, fax number (765)496-3181, and a link to the Privacy Policy. The browser's status bar at the bottom shows "Done" and the URL "reassure.cerias.purdue.edu".



Pascal Meunier

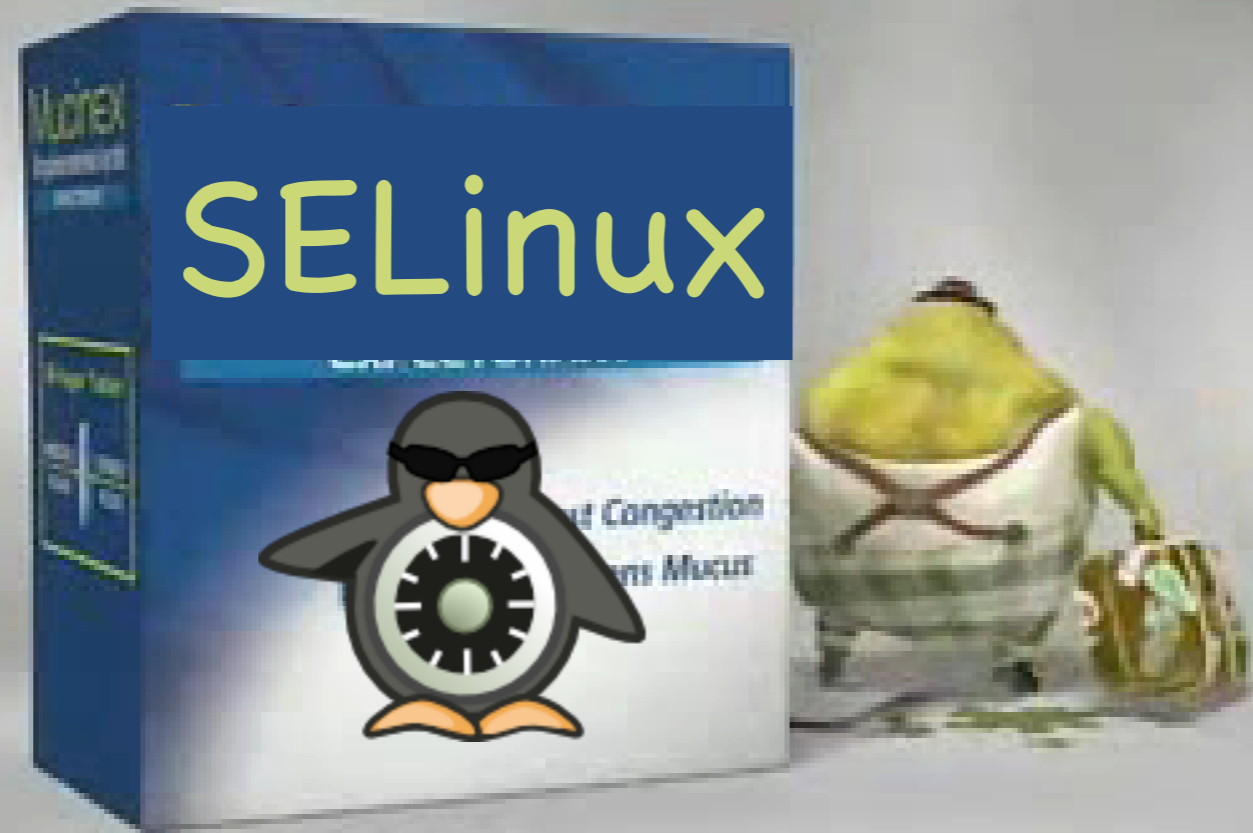
Virtual Machines, Virtual Machines, Virtual Security?



Accommodative Mandatory Access Control

- Capitalize on SELinux mechanisms
- Administrative model for SELinux
- Custom experiments without VM

Healthy Testbed



SELinux in. Malware out.

Questions

- When is a machine considered clean ?
- How does our SELinux admin model work ?
- Interesting for GENI ?
- Why SELinux ?

Thank you

jthomas@cs.purdue.edu